



The Blue1 Naked for cars is specially engineered for above ground AdBlue storage. With the Blue1 Naked we can offer a complete range of volumes from 1000L up to 10.000L

This solution, which offers an optimal combination between price and quality, is engineered and built according to the highest quality standards, to make sure that your AdBlue keeps its 100% purity.



Product Specifications

- Plug and play
- Bunded
- Volume 1000L to 10000L
- Stainless Steel Piping
- DDC-coupling
- Submersible Pump 10L min
- Dry run security
- Heating
- Level gauge + indication
- Overfill protection ATEX
- Telemetry ATEX (option)
- DIBT (option)
- KIWA (option)

Principle:

The housing is built up out of insulated fibreglass reinforced sandwich elements and is divided into 2 compartments:

- Compartment 1 is completely liquid tight and acts as a bund
- Compartment 2 is the technical compartment in which the unit can be serviced and filled up.

The temperature inside the unit is constantly controlled to ensure the operational temperature of the AdBlue.

The installation is approved to be place in a hazardous area in accordance to EX II 3/- G, IIA T3

Filling up the unit:

The unit can be filled up standard through the side fill panel.

The Dry Disconnect Coupling makes sure that all deliveries will occur without leakage and on the other hand the overfill prevention will make sure that an overfill off the unit is impossible.

Connection to Industrial satellite or commercial dispenser:

The unit is completely prepared to connect all types of industrial and commercial dispensers or satellites. The Blue1 Naked for cars is standard equipped to deliver AdBlue for 1 dispenser, but can be upgraded to deliver AdBlue for up to 5 dispensers. The installation can also be fitted with a connection kit for dispenser to mount a dispenser directly at the side of the installation.

Level indication:

The volume inside the unit is constantly monitored and is shown off on a display.

Piping:

All piping is 16 bar approved and is always in Stainless Steel.





VISUALIZE YOUR VOLUMES

Measuring and monitoring in real time is an essential tool in a world of short global communication lines. Therefore Blue1 developed a complete telemetry system which covers hardware, communication and visualization.

Product Specifications

- Plug and play
- Bundled
- Volume 1000L to 10000L
- Stainless Steel Piping
- DDC-coupling
- Submersible Pump 10L min
- Dry run security
- Heating
- Level gauge + indication
- Overfill protection ATEX
- Telemetry ATEX (option)
- DIBT (option)
- KIWA (option)

ONE PARTNER FOR

- hardware
- communication
- web based backoffice
- installation, maintenance and service



NO SOFTWARE INSTALLATION

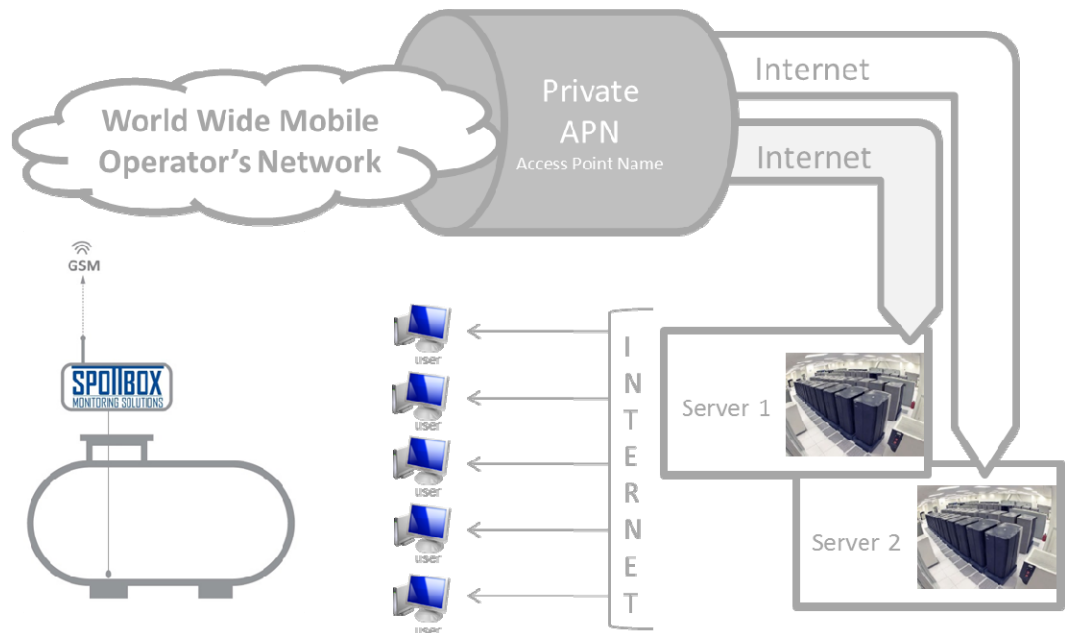
ONE SIMCARD WITH WORLD COVERAGE

PROVEN TECHNOLOGIE

REAL TIME DATA CONVERTED TO VALUE ADDED INFORMATION

STATE OF THE ART HIGH END BACKOFFICE AND USER INTERFACE

The system enables you to keep track of all the volumes in your AdBlue tanks



Waaslandlaan 24
9160 Lokeren
Belgium
Tel: +32 9 349 37 51
Fax: +32 9 349 37 52
Mail: info@blue1.be
Website: www.blue1.be



Product Specifications

- Plug and play
- Bunded
- Volume 1000L to 10000L
- Stainless Steel Piping
- DDC-coupling
- Submersible Pump 10L min
- Dry run security
- Heating
- **Level gauge + indication**
- **Overfill protection ATEX**
- **Telemetry ATEX (option)**
- **DIBT (option)**
- **KIWA (option)**

Product data specifications Blue1 Naked for cars



	Volume	Length	Width	Height	Kg
Dimensions	1000L	1880 mm	830 mm	1620 mm	350 kg
	1500L	2240 mm	800 mm	2075 mm	400 kg
	2000L	2440 mm	850 mm	2090 mm	450 kg
	3000L-S	2.820 mm	990 mm	2.320 mm	700 kg
	3000L	2.860 mm	1.170 mm	2.320 mm	700 kg
	4000L	2.860 mm	1.170 mm	2.320 mm	750 kg
	5000L	3.370 mm	1.530 mm	2.317 mm	750 kg
	7.500L	4.600 mm	1.530 mm	2.317 mm	980 kg
	10.000L	5.800 mm	1.530 mm	2.317 mm	1.250 kg
	Housing	Insulated sandwich panels integrated in fibreglass structure and acts as a bund, colour: standard white			
Tank	Single walled / polyethylene / installed in compartment				
Flow rate	Between 5 and 10L/min with flow rate modification valve				
Pump	Submersible pump 1000W				
Heating	Anti freeze heating 1500W				
Piping	Stainless Steel 16 bar approved				
Filling point	Dry Disconnect Coupling / Side fill (
Level Sensor	4-20 mA				
Level indicator	standard				
Overfill protection	Fafnir plug / active overfill alarm with reset button (optional)				
Leak detection	ATEX sensor in bunded area to detect leakage off primary tank or overfill (optional)				
Power supply	1x230 VAC, 16 A, 3x2,5mm ² ,				
Attestation	EX II 3/- G, IIA T3				
Connection kit for dispenser	Optional				
Telemetry	Optional-ATEX				
Pressure reducing valve	Optional 1-6 bar with gauge (optional)				

