



Product Specifications

- Plug and play
- Volume 3700L
- Stainless Steel Piping
- Hose length 5m (8m option)
- DDC-coupling
- Submersible Pump 40L/min
- Dry run security
- Automatic nozzle

The Blue1 BlueBox-Eco is specially developed for fleet owners and workshops who want to purchase their AdBlue in bulk deliveries with a price advantage as a result.

This solution, which offers an optimal combination between price and quality, is engineered and built according to the highest quality standards, to make sure that your AdBlue keeps its 100% purity.



Installation of the unit:

As the unit is developed for plug and play purpose, no precautionary actions have to be taken besides a regular power supply and a flat surface.

Piping:

All piping is approved up to 16 bar and always in Stainless Steel.

Filling up the unit:

The Dry Disconnect Coupling makes sure that all deliveries will occur without leakage.

Filling up your SCR-vehicle:

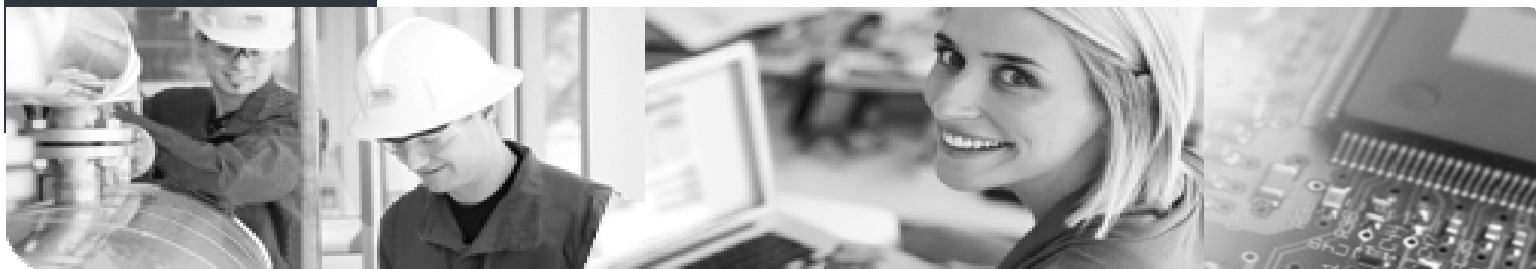
The unit is equipped with an automatic nozzle. A standard hose length of 5m which gives you the necessary flexibility to fill up your SCR-vehicle in a safe, fast and cost-efficient way.

Dimensions:

LxWxH= 2.250x1.020x2.100

Maximum power consumption:

1000W, 10A, 230V





Measuring and monitoring in real time is an essential tool in a world of short global communication lines. Therefore Blue1 developed a complete telemetry system which covers hardware, communication and visualization.

ONE PARTNER FOR

- hardware
- communication
- web based backoffice
- installation, maintenance and service



NO SOFTWARE INSTALLATION

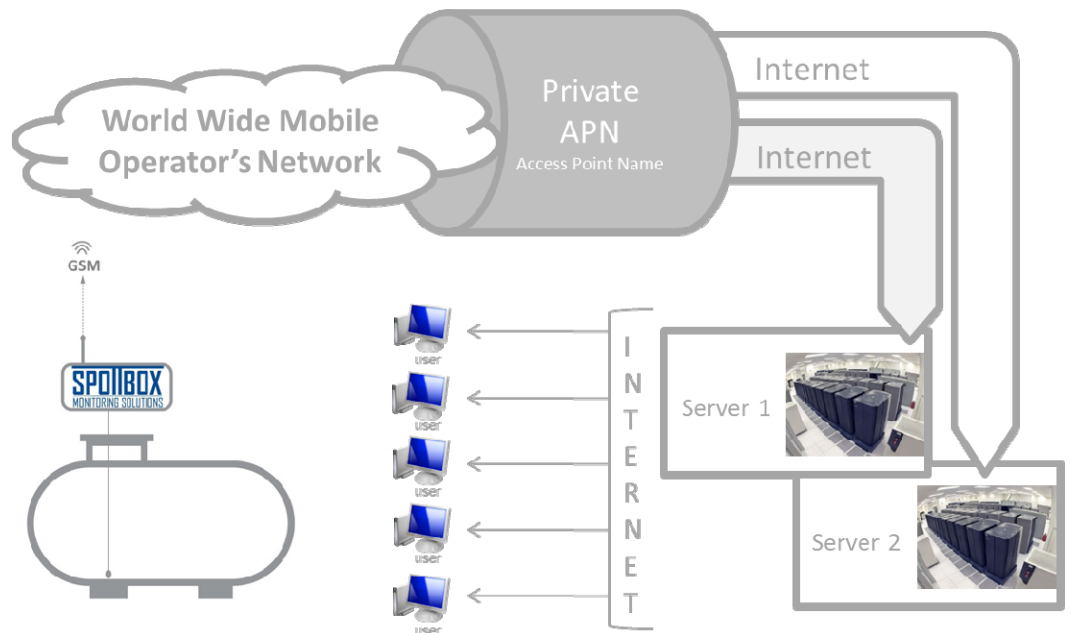
ONE SIMCARD WITH WORLD COVERAGE

PROVEN TECHNOLOGIE

REAL TIME DATA CONVERTED TO VALUE ADDED INFORMATION

STATE OF THE ART HIGH END BACKOFFICE AND USER INTERFACE

The system enables you to keep track of all the volumes in your AdBlue tanks



Waaslandlaan 24
9160 Lokeren
Belgium
Tel: +32 9 349 37 51
Fax: +32 9 349 37 52
Mail: info@blue1.be
Website: www.blue1.be





Blue1 BlueBox Product data specifications

Product Specifications

- Plug and play
- Volume 3700L
- Stainless Steel Piping
- Hose length 5m (8m option)
- DDC-coupling
- Submersible Pump 40L/min
- Dry run security
- Automatic nozzle

Dimensions	Length	Width	Height	Kg
	2.250mm	1.020 mm	2.100mm	285 kg
Tank	Volume 3700L			
Nozzle	Automatic nozzle Elaflex			
Operating panel	Stainless Steel			
Power supply	1x230 VAC, 10 A, for non hazardous area			
Hose	5m hose (brand Blue1)			
Flow rate	Adjustable between 5 and 10L/min			
Pump	Submersible pump 1000W			
Piping	Stainless Steel			
Filling point	Dry Disconnect coupling			
Dry run security	Standard			
Level indicaton	Visual level inside the tank			

Options

Telemetry GPRS - SMS modem
Counter Package (pulser, counter with LCD display, possibility to connect to registration)
Overfill prevention with acoustic alarm
Hose length extension up to 8m
Swivel



Waaslandlaan 24
9160 Lokeren

Belgium

Tel: +32 9 349 37 51

Fax: +32 9 349 37 52

Mail: info@blue1.be

Website: www.blue1.be

