



The Blue1 Ecoline is specially engineered for the fleet owner to fill up the AdBlue of their new SCR truck in a:

Fast, Easy, Controlled, User-friendly, Safe, ... way

The Blue 1 Eco-line is a 3.000L to 15.000L installation which is very user- and maintenance friendly to ensure the continuation of your tanking operations.

This solution, which offers an optimal combination between price and quality, is engineered and built according to the highest quality standards, to make sure that your AdBlue keeps its 100% purity.



Product Specifications

- Plug and play
- Bunded
- Volume 3000L or 5000L
- Stainless Steel Piping
- Balancer 5m (8m option)
- DDC-coupling
- Submersible Pump 40L/min
- Dry run security
- Heating
- Elaflex Nozzle
- Level gauge + indication
- Counter
- Litre display
- Overfill protection
- Connection to fuel management possible
- Telemetry (option)
- DIBT (option)
- KIWA (option)

Principle:

The housing is built up out of insulated fibreglass reinforced sandwich elements and is divided into 2 compartments:

- Compartment 1 is completely liquid tight and acts as a bund
- Compartment 2 is the technical compartment in which the unit can be serviced and filled up. The dispensing unit is integrated into this compartment.

The temperature inside the unit is constantly controlled to ensure the operational temperature of the AdBlue.

Filling up the unit:

The unit can be filled up through the door at the side of the unit which gives access to the technical compartment of the installation.

The Dry Disconnect Coupling makes sure that all deliveries will occur without leakage and on the other hand the overfill prevention will make sure that an overfill off the unit is impossible.

Filling up the SCR truck:

The unit is standard equipped with a balancing retraction system with a hose length of 5 m and an Elaflex nozzle which is mounted behind an insulated stainless steel door. A counter with display is standard foreseen on the unit.

The unit can be equipped for double sided dispensing.

Connection to fuel management system:

The unit can be connected to all kinds of fuel management systems.

Level indication:

The volume inside the unit is constantly monitored and is shown on a display.

Piping:

All piping is 16 bar approved and is always in Stainless Steel.



Waaslandlaan 24
9160 Lokeren
Belgium

Tel: +32 9 349 37 51
Fax: +32 9 349 37 52
Mail: info@blue1.be
Website: www.blue1.be





VISUALIZE YOUR VOLUMES

Measuring and monitoring in real time is an essential tool in a world of short global communication lines. Therefore Blue1 developed a complete telemetry system which covers hardware, communication and visualization.

Product Specifications

- Plug and play
- Bundled
- Volume 3000L or 5000L
- Stainless Steel Piping
- Balancer 5m (8m option)
- DDC-coupling
- Submersible Pump 40L/min
- Dry run security
- Heating
- Elaflex Nozzle
- Level gauge + indication
- Counter
- Litre display
- Overfill protection
- Connection to fuel management possible
- Telemetry (option)
- DIBT (option)
- KIWA (option)

ONE PARTNER FOR

- hardware
- communication
- web based backoffice
- installation, maintenance and service



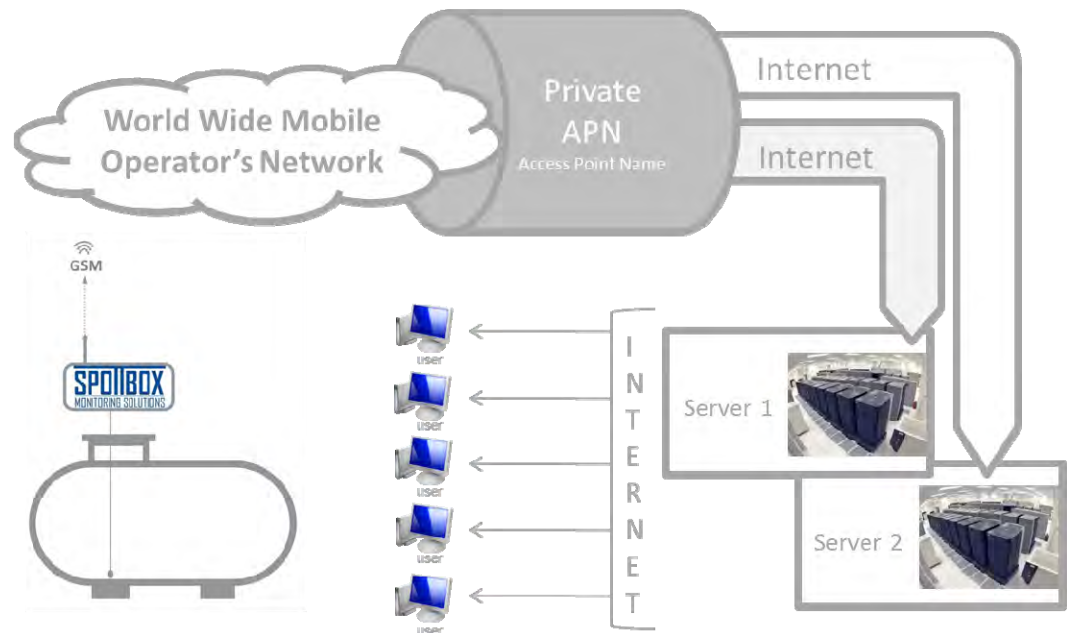
NO SOFTWARE INSTALLATION

ONE SIMCARD WITH WORLD COVERAGE

PROVEN TECHNOLOGIE

REAL TIME DATA CONVERTED TO VALUE ADDED INFORMATION

STATE OF THE ART HIGH END BACKOFFICE AND USER INTERFACE



Waaslandlaan 24
9160 Lokeren
Belgium
Tel: +32 9 349 37 51
Fax: +32 9 349 37 52
Mail: info@blue1.be
Website: www.blue1.be



Product Specifications

- Plug and play
- Bunded
- Volume 3000L to 15000L
- Stainless Steel Piping
- Balancer 5m (8m option)
- DDC-coupling
- Submersible Pump 40L/min
- Dry run security
- Heating
- Elaflex Nozzle
- Level gauge + indication
- Counter
- Litre display
- Overfill protection
- Connection to fuel management possible
- Telemetry (option)
- DIBT (option)
- KIWA (option)

Product data specifications Blue1 Ecoline

	Volume	Length	Width	Height	Kg
Dimensions	3000L-S	2.820 mm	990 mm	2.320 mm	700 kg
	3000L	2.860 mm	1.170 mm	2.320 mm	700 kg
	4000L	2.860 mm	1.170 mm	2.320 mm	700 kg
	5000L	3.370 mm	1.530 mm	2.317 mm	750 kg
	7500L	4.600mm	1.530 mm	2.317mm	980 kg
	10000L	5.820mm	1.530 mm	2.317mm	1.250 kg
	15000L	9.260 mm	1.530 mm	2.450 mm	1.875 kg
Housing	Insulated sandwich panels integrated in fibreglass structure and acts as a bund, colour: standard white				
Tank	Single walled / polyethylene / installed in compartment 1				
Door	Nozzle behind insulated stainless steel door				
Nozzle	Elaflex nozzle				
Hose	5m hose in combination with balancer (brand Blue1, 8m optional in combination with hose reel)				
Hose retraction	Balancing system with 5m hose (hose reel 8m as an option)				
Flow rate	Between 30 and 40L/min				
Pump	Submersible pump 1000W				
Heating	Anti freeze heating 1000W / 2000W				
Piping	Stainless Steel 16 bar approved				
Filling point	In technical compartment (2) / Dry Disconnect Coupling				
Volume Display	Intelligent display with user information 240x640 pixels with LED backlight				
Level Sensor	4-20 mA				
Level indicator	digital				
Overfill protection	Fafnir plug / active overfill alarm with reset button (optional)				
Leak detection	Sensor in bunded area to detect leakage off primary tank or overfill (optional)				
Power supply	1x230 VAC, 16 A, 3x2,5mm ² , for non hazardous area				
Telemetry	optional				

