



## Blue1 BlueBox-Eco

### Product Specifications

- Plug and play
- Volume 3700L
- Stainless Steel Piping
- Hose length 5m (8m option)
- DDC-coupling
- Submersible Pump 40L/min
- Dry run security
- Automatic nozzle

The Blue1 BlueBox-Eco is specially developed for transport companies who want to purchase their AdBlue in bulk deliveries with a price advantage as a result.

This solution, which offers an optimal combination between price and quality, is engineered and built according to the highest quality standards, to make sure that your AdBlue keeps its 100% purity.



### Installation of the unit:

As the unit is developed for plug and play purpose, no precautionary actions have to be taken besides a regular power supply and a flat surface.

### Piping:

All piping is approved up to 16 bar and is always in Stainless Steel.

### Filling up the unit:

The Dry Disconnect Coupling makes sure that all deliveries will occur without leakage.

### Filling up your SCR-truck:

The unit is equipped with an automatic nozzle. A standard hose length of 5m which gives you the necessary flexibility to fill up your SCR-truck in a safe, fast and cost-efficient way.

### Dimensions:

LxWxH= 2.250x1.020x2.100

### Maximum power consumption:

1000W, 10A, 230V





## VISUALIZE YOUR VOLUMES

Measuring and monitoring in real time is an essential tool in a world of short global communication lines. Therefore Blue1 developed a complete telemetry system which covers hardware, communication and visualization.

### Product Specifications

- Plug and play
- Volume 3854L
- Stainless Steel Piping
- Hose length 5m (8m option)
- DDC-coupling
- Submersible Pump 40L/min
- Dry run security
- Automatic nozzle

### ONE PARTNER FOR

hardware  
communication  
web based backoffice  
installation, maintenance and service

**NO SOFTWARE INSTALLATION**

**ONE SIMCARD WITH WORLD COVERAGE**

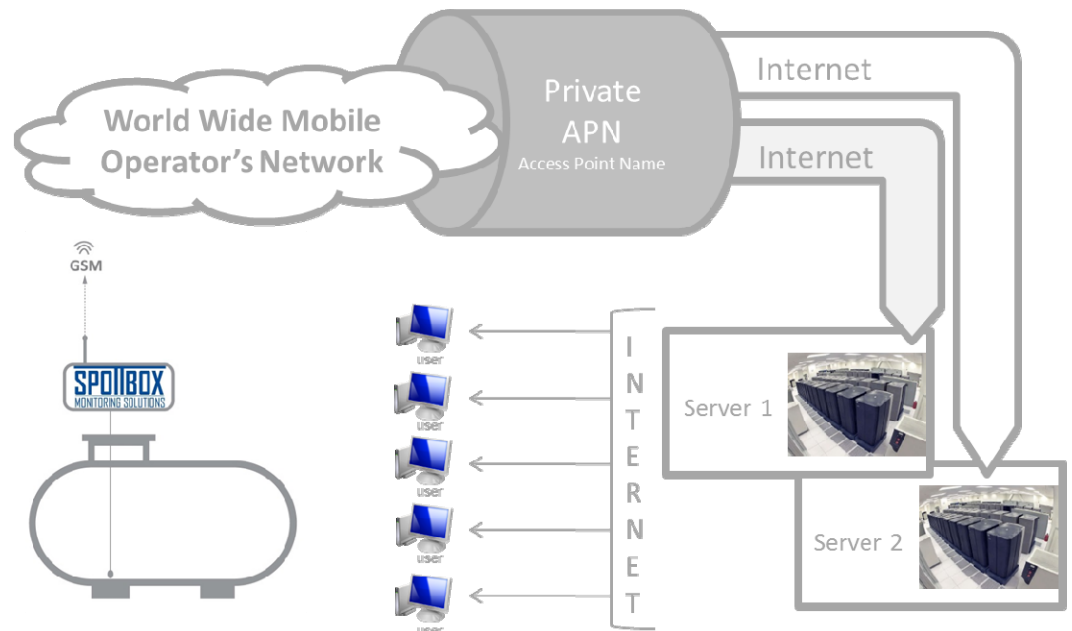
**PROVEN TECHNOLOGIE**

**REAL TIME DATA CONVERTED TO VALUE ADDED INFORMATION**

**STATE OF THE ART HIGH END BACKOFFICE AND USER INTERFACE**



The system enables you to keep track of all the volumes in your AdBlue tanks



Waaslandlaan 24  
9160 Lokeren  
Belgium  
Tel: +32 9 349 37 51  
Fax: +32 9 349 37 52  
Mail: info@blue1.be  
Website: www.blue1.be





## Blue1 BlueBox Eco Product data specifications

### Product Specifications

- Plug and play
- Volume 3700L
- Stainless Steel Piping
- Hose length 5m (8m option)
- DDC-coupling
- Submersible Pump 40L/min
- Dry run security
- Automatic nozzle

### PRODUCT DATA BlueBox-Eco standard configuration

Dimensions	Length	Width	Height	Kg
	2.250mm	1.020 mm	2.100mm	285 kg
Tank	Volume 3700L			
Nozzle	Automatic nozzle Elaflex			
Operating panel	Stainless Steel			
Power supply	1x230 VAC, 10 A, for non hazardous area			
Hose	5m hose (brand Blue1)			
Flow rate	Between 30 and 40L/min			
Pump	Submersible pump 1000W			
Piping	Stainless Steel			
Filling point	Dry Disconnect coupling			
Dry run security	Standard with float			
Level indicaton	Visual level inside the tank			

### Options

Telemetry GPRS - SMS modem
Counter Package (pulser, counter with LCD display, possibility to connect to registration)
Overfill prevention with acoustic alarm
Hose length extension up to 8m
Swivel

