



- Basic Version
- Premium Version

#### Product Specifications

##### Basic Version

- Plug and play
- Bundled
- Volume 3700L
- Stainless Steel Piping
- Hose length 5m (8m option)
- DDC-coupling
- Submersible Pump 40L/min
- Dry run security
- Heating
- Automatic nozzle
- Overfill protection + alarm
- Telemetry (option)

##### Premium Version

- Plug and play
- Bundled
- Volume 3700L
- Stainless Steel Piping
- Hose length 5m (8m option)
- Hose reel
- DDC-coupling
- Submersible pump 40L/min
- Dry run security
- Heating
- Automatic nozzle
- Overfill protection + alarm
- Hose retraction system (hose reel)
- Level gauge + indication
- Counter
- Litre display
- Connection to fuel management possible
- Telemetry (option)

The Blue1 BlueBox is specially developed for transport companies who want to purchase their AdBlue in bulk deliveries with a price advantage as a result.

This solution, which offers an optimal combination between price and quality, is engineered and built according to the highest quality standards, to make sure that your AdBlue keeps its 100% purity.



#### Installation of the unit:

As the unit is developed for plug and play purpose, no precautionary actions have to be taken besides a regular power supply and a flat surface.

#### Piping:

All piping is approved up to 16 bar and is always in Stainless Steel.

#### Filling up the unit:

The Dry Disconnect Coupling makes sure that all deliveries will occur without leakage.

#### Filling up your SCR-truck:

The unit is equipped with an automatic nozzle. A standard hose length of 5m which gives you the necessary flexibility to fill up your SCR-truck in a safe, fast and cost-efficient way.

#### Dimensions:

LxWxH= 2820x1200x2390

#### Maximum power consumption:

2200W, 10A, 230V

#### Difference between Basic and Premium

- Level package
- Counter package
- Possibility for connection to fuel management system
- Hose Reel





## VISUALIZE YOUR VOLUMES

Measuring and monitoring in real time is an essential tool in a world of short global communication lines. Therefore Blue1 developed a complete telemetry system which covers hardware, communication and visualization.

### Product Specifications

#### Basic Version

- Plug and play
- Bundled
- Volume 3700L
- Stainless Steel Piping
- Hose length 5m (8m option)
- DDC-coupling
- Submersible Pump 40L/min
- Dry run security
- Heating
- Automatic nozzle
- Overfill protection + alarm
- Telemetry (option)

#### Premium Version

- Plug and play
- Bundled
- Volume 3700L
- Stainless Steel Piping
- Hose length 5m (8m option)
- Hose reel
- DDC-coupling
- Submersible pump 40L/min
- Dry run security
- Heating
- Automatic nozzle
- Overfill protection + alarm
- Hose retraction system (hose reel)
- Level gauge + indication
- Counter
- Litre display
- Connection to fuel management possible
- Telemetry (option)

### ONE PARTNER FOR

- hardware
- communication
- web based backoffice
- installation, maintenance and service

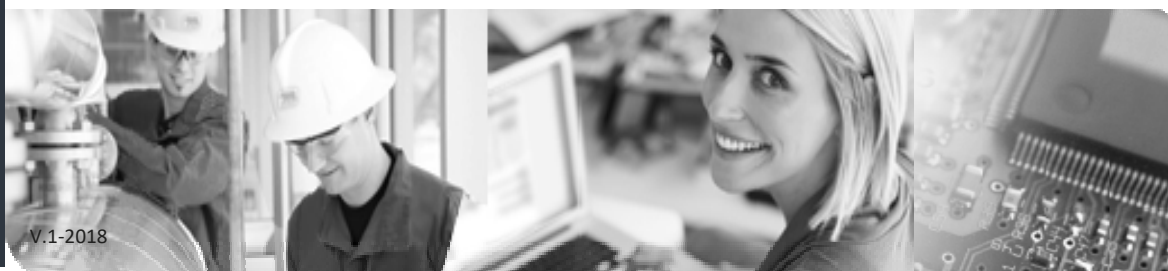
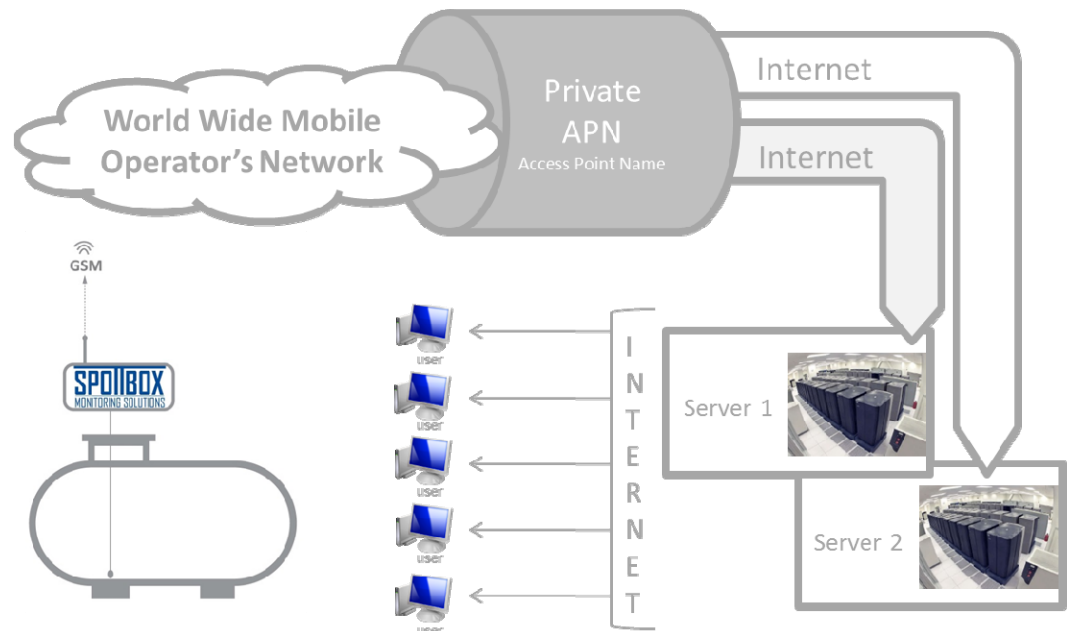
### NO SOFTWARE INSTALLATION

### ONE SIMCARD WITH WORLD COVERAGE

### PROVEN TECHNOLOGIE

### REAL TIME DATA CONVERTED TO VALUE ADDED INFORMATION

### STATE OF THE ART HIGH END BACKOFFICE AND USER INTERFACE





# Blue1 BlueBox Product data specifications

Dimensions	Length	Width	Height	Kg
	2.820mm	1.200 mm	2.330mm	520 kg
Housing	Polyethylene which acts as a bund			
Tank	Volume 3700L			
Power supply	1x230 VAC, 10 A, for non hazardous area			
Hose	5m hose (brand Blue1)			
Flow rate	Between 30 and 40L/min			
Pump	Submersible pump 1000W			
Heating	Anti freeze heating 1500W-3000W			
Piping	Stainless Steel			
Filling point	Dry Disconnect coupling behind door			
Overfill prevention	Sensor + acoustic alarm			

## Product Specifications

### Basic Version

- Plug and play
- Bunded
- Volume 3700L
- Stainless Steel Piping
- Hose length 5m (8m option)
- DDC-coupling
- Submersible Pump 40L/min
- Dry run security
- Heating
- Automatic nozzle
- Overfill protection + alarm
- Telemetry (option)

### Premium Version

- Plug and play
- Bunded
- Volume 3700L
- Stainless Steel Piping
- Hose length 5m (8m option)
- Hose reel
- DDC-coupling
- Submersible pump 40L/min
- Dry run security
- Heating
- Automatic nozzle
- Overfill protection + alarm
- Hose retraction system (hose reel)
- Level gauge + indication
- Counter
- Litre display
- Connection to fuel management possible
- Telemetry (option)

	Basic Version	Premium Version
Nozzle	Automatic nozzle Elaflex	Automatic nozzle Elaflex
Hose reel	Optional	Standard
Dry run security	Standard	Standard
Counter	Optional package	Standard
Pulser	Optional package	Standard 10 or 100 pulses / litre
Overfill protection	Standard alarm + reset button	Standard alarm + reset button
Level indication	Standard mechanical Electronic optional package	Standard electronic 4 - 20mA
Leak detection in bunded area	Optional	Optional
Telemetry	Optional	Optional

### Package upgrades for Basic Version

Counter package	Counter - pulser - pulse output
Level package	Electronic level sensor- level indication - overfill alarm

### Options

Telemetry GPRS - SMS modem
Hose retraction system - hose reel, standard foreseen with 5m hose
Leak detection in bunded area
Hose length extension up to 8m
Swivel

