



**Wayne**

**MANUAL GLOBAL STAR COMPACT SCR  
4000L-5000L-7500L-10000L**





## LIST OF CONTENTS

A. Introduction .....	3
B. Installing the unit .....	3
B.1. Transportation .....	3
B.2. Installation .....	3
C. Ready for service .....	4
C.1. Connecting electrical power .....	4
C.2. First fuelling of tank .....	4/5/6
C.3. Rinsing .....	6
D. Use .....	6
E. Read-outs .....	7
E.1. Liquid supply meter .....	7
F. Maintenance and servicing .....	7
F.1. Cleaning the outside surfaces of the tank unit .....	7
F.2. Damage .....	7
G. Technical specifications .....	7/8
H. AdBlue properties .....	8
I. AdBlue safety information .....	8
I.1. First Aid .....	8
I.2. Fire fighting .....	9
I.3. Unintended release .....	9
J. Potential malfunctions .....	9

## **A. Introduction**

*This manual has been compiled for a 4000/5000/7500/10000 litres AdBlue tank and dispensing unit, manufactured by Blue1. It offers a summary description of the various operating instructions in order to use the unit in a duly correct manner. These operating instructions are intended to serve both the owner as well as the person(s) in charge of fuelling the tank and maintaining the unit as well as the customer/user fuelling up on the product from the dispensing unit. The unit is strictly suited to be used for industrial applications.*

## **B. Installing the unit**

### **B.1. Transportation**

*The unit is to be transported by forklift truck. Under transport conditions, no liquid should be contained inside the tank. If no forklift truck is available, the unit can be transported with the assistance of straps and slings which can be guided through the recesses intended for the forklift truck's forks. In doing so, please use a crosstie to prevent the unit's lid from being compressed.*

### **B.2. Installation**

*The unit is to be placed onto a stable and level floor bed made up by a liquid-proof paved surface. The unit is to be positioned level in such a way so as to ensure it can be accessed from each side for cleaning and maintenance purposes. In order to prevent any drive-up damage (i.e. caused by vehicles driving up to the unit), it is necessary to put in place drive-up safety precautions around the unit. The unit is to be placed outside of any explosive hazard areas.*

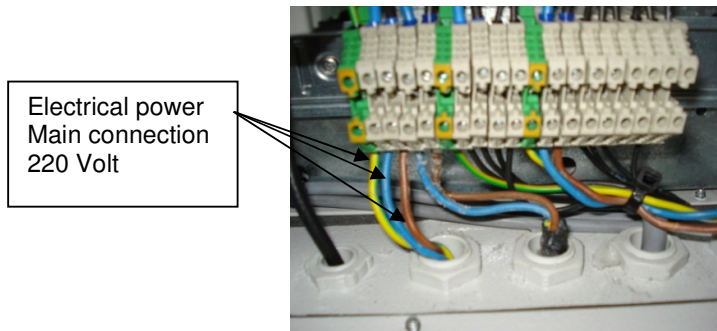
*The pump is demounted to avoid transport damage. Before use you will have to mount the pump in the tank. Put the sealing in the coupling and place the rubber around the tube.*



## C. *Readying for service*

### C.1. *Connecting electrical power*

*Prior to fuelling the tank with AdBlue, the electrical power needs to be connected in observance of the connection diagram appended.*



*Please make sure that the installation's automaton inside the switchboard cabinet is switched off.*

*As the unit is switched off, the display of the liquid level gauge will light up.*

### C.2. *First fuelling of tank*

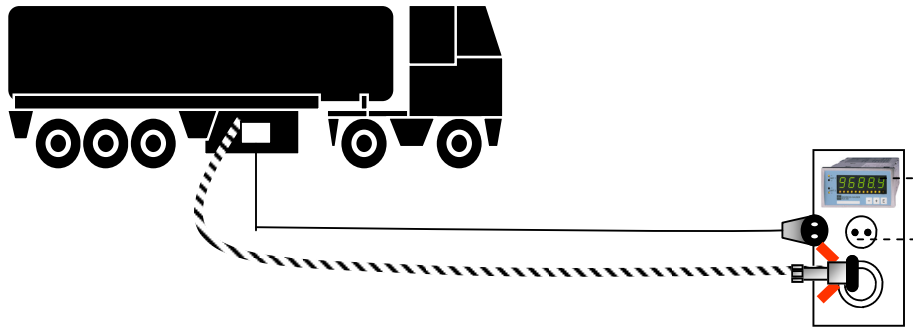
*The responsibility for the tank's first fuelling rests with the unit's installer, together with the driver of the tank lorry who – in all cases – should act in due compliance with local safety regulations and in the strictest observance of the safety of man, animals and the environment.*

*Upon arrival of the tank lorry, the driver is to position his lorry in such a way that the unloading face of his vehicle is right opposite the Tank Unit.*

*The following series of actions are to be performed in the order sequence as indicated below:*



- 1) Open the panels of the dispenser.. The lid of the Tank Unit is to be opened with a gentle upward tilting movement which will cause the lid to open up by itself by dint of the gas spring that are in place.
- 2) Inspect the inside of the tank to make sure it is clean. If there are any visible traces of product, water or contaminations, these will need to be cleaned away first.
- 3) Inspect the tank compartment (clean and dry).
- 4) Connect the filling connector



- 5) Use the tank lorry's flow meter and respect the volumes listed in the next sheet. Whilst fuelling, check whether the liquid level gauge is rising !

<b>Volume tank</b>	<b>Maximum refuel volume</b>
4000 litres	3750 litres
5000 litres	4750 litres
7500 litres	7350 litres
10000 litres	9800 litres

- 6) Check the liquid level gauge's reading and adjust the meter if required  
Check the level inside the tank

- 7) Now check the overflow safety by continuing to fill the tank at a slow pace right up to the point where the pump of the tank lorry automatically stalls. Make sure you keep an eye on the tank level !! If the optional acoustic alarm is fitted, it starts sounding when the tank reaches his maximum filling point. Please press the horn reset button to stop the sound.
- 8) If required, the filling hose can be blow out inside the tank. At all times though, avoid too much air being blown into the tank.
- 9) The filling hose is now ready to be disconnected.
- 10) Put the panel of the dispenser back in place



***If you are fuelling the tank using compressed air, maximum delivery pressure should not exceed 1 bar. Normally, the filling speed in free fall will be anywhere between 100 up to 200 l/min. During unloading, the liquid level inside the tank can be read from the display.***

***If you are fuelling the tank using compressed air, maximum delivery pressure should not exceed 1 bar.***

***Make sure you thoroughly clean up any spilled liquid by washing any traces away using water.***

### **C.3. Rinsing upon first operational use**

*Remove the nozzle and slide the magnetic adapter over the nozzle.*

*Rinse just as long until the liquid starts clearing up again (around 5 litres)*

### **D. Use**

*In order to be able to fuel up on AdBlue, the Elaflex nozzle is to be taken out. This will activate the pump. The AdBlue tank on the road tanker has to carry an Elafix 40 magnetic adapter to enable fuelling with the use of the Elaflex nozzle.*

*The nozzle will not work without the adapter and no AdBlue can be dispensed.*

*After fuelling, please put the nozzle back into its rightful holder and close the door*

## **E. Read-outs**

### **E.1. Liquid level gauge**

The tank container is equipped with a 'continuous liquid level measuring' device, which serves to monitor the level of the tank on a permanent basis. This level gauge has a reading display behind the panel of the dispenser.



## **F. Maintenance**

### **F.1. Cleaning the outside surfaces of the tank unit**

The outside surfaces of the tank unit are best cleaned using normal cleaning agent, a degreasant, water and soap. Do not use any agents such as thinner or turpentine which may cause the self-adhesive labels to dissolve.

#### **Important notice:**

*Never use a high-pressure spray device (electrical hazard)*

### **F.2. Damage**

The housing of the tank unit also serves as insulation.

## **G. Technical specifications**

### **Housing**

Encasement made from polyester, serves as a drip collector next to being in place for insulation purposes

2 compartments:

Liquid-proof compartment for the installation of the AdBlue tank unit

Technical compartment for dispenser

### **Weight**

ca. 700/750/980/1250 kg (empty tank)

### **Tank**

Single-walled plastic material

4000/5000/7500/10000 litres volume

Heating



<b>Sensors</b>	Liquid level gauge equipped with telemetry capability Overflow safety (automatic dispensing pump switch-off) Filling coupling (type MANNTEC DN 50)
<b>Pump</b>	Plunger pump inside tank Flow rate ca. 40 l/minute
<b>Dispenser</b>	Single-sided with flow meter (pulse counter) and one charging nozzle Filling hose, ca. 8 m in length Charging nozzle automatic shut-off on release and magnetic valve (Elaflex) door for the winter (from 0 °C)

## **H. AdBlue properties**

Adblue is a 32.5% urea solution.

It comes as a clear, colourless liquid that gives off an odour similar to ammonia.

Its properties have been defined under DIN 70700.

Although AdBlue has not been classed as a hazardous substance, if heated the liquid may give off toxic vapours (carbon monoxide, carbon dioxide, nitrogen, ammonia), which may reduce oxygen levels in the surrounding air.

AdBlue has a 10.5 °C freezing point. A heating device has been put in place inside the unit, to ensure temperatures never drop below 0 °C.

### **Important notice:**

*In wintertime, the door is to be kept locked at all times. In wintertime, the power supply is not to be switched off (except for repairs).*

*In the event of spillage or leakage, the liquid will start to crystallise.*

*The resulting crystals are white and are easily washed away with water.*

*In the event of leakage, please contact your service organisation without delay (see telephone numbers on the first page of this manual).*

## **I. AdBlue safety information**

*When a unit is being installed, a safety information sheet should be kept at hand in all cases.*

*This sheet contains specific health and safety information.*

### **I.1. First Aid**

**Ingestion** *If large quantities of the substance should be ingested, call for a physician without delay. Do not induce the victim to vomit, unless you are instructed to do so by trained medical staff. Never administer an unconscious person any substances by mouth.*

**Skin contact** *Avoid protracted or repeated contact with the skin. After handling the product, always make sure you thoroughly wash your hands using water and soap. Should you experience any irritation, contact a physician.*

**Eye contact** *In the event of the substance coming into contact with the eyes, rinse abundantly using water, without any delay. Should you experience any irritation to your eyes, contact a physician.*

### **I.2. Fire fighting**

*In the event of fire, use water spray (nebulisation), foam, dry chemical fire extinguishing agents or carbonic acid gas.*

*Fire fighters are to use self-contained compressed air breathing apparatuses and their full equipment.*

*If heated, the liquid may give off toxic vapours (carbon monoxide, carbon dioxide, nitrogen, ammonia).*

### **I.3. Unintended release**

*Avoid any contact with spilled substance and prevent it from draining away into the soil or surface water. Absorb any spilt amounts of the substance using dry earth, sand or a different non-inflammable material. Use tools to scoop up any fixed or absorbed substance and deposit into an appropriate, duly labelled collection bin. Make sure no dusty conditions occur and prevent the substance from being spread out by the wind. Keep away from surface water.*

### **J. Potential Malfunctions**

*The unit comes with a ZVA Elaflex type nozzle, suited to be used for Ad Blue. This nozzle has a safety device in the way of a venturi tube which only operates in combination with a special magnet.*

*This magnet has been put in place inside the neck of the Adblue tank on the tanker lorry.*

*As such, the unit can only be tested with the assistance of this special magnet.*

<b>Malfunction</b>	<b>Possible cause</b>	<b>Solution</b>
<i>Pump is not working</i>	<i>Not enough liquid left inside the tank. Pump has been switched off by dry run protection</i>	<i>Check the content of the tank on the liquid level gauge</i>
<i>Pump does not switch on when the nozzle is lifted out of the holder</i>	<i>Power outage</i>	<i>Check power supply</i>
<i>Pump is not working</i>	<i>Nozzle blocked due to crystallisation (white crystals)</i>	<i>Dissolve the crystals by tipping the nozzle in hot water for 1 minute</i>
<i>Pump is not working</i>	<i>Freezing</i>	<i>Keep door closed and wait until the hose and nozzle have warmed up again</i>
<i>Liquid level gauge is not on</i>	<i>Power outage</i>	<i>Check power supply</i>

**In case of malfunctions and any other services, please contact your local Dresser dealer**